
WOKING SWIMMING CLUB



Affiliated to: Swim England, Swim England South East Region & Surrey ASA

www.wokingsc.co.uk

Dropoff/Collection Instructions for Learn 2 Swim classes at Horsell School during the COVID-19 Pandemic

As an affiliate of Swim England, we have a duty of care to all swimmers to ensure adequate safeguarding and child protection policies are in place for ALL children under the age of 17. In accordance with National guidelines, we have drawn up a drop off and collections procedure for all sessions and for all pools.

Please pay particular attention as to when the responsibility of the coaches starts and ends. Outside of these times, the responsibility for swimmers is with the parent and or responsible adult. We would also ask that the behaviour in and around these pools is respected to prevent injury or damage to a person or property.

This version of the policy outlines additional safeguards for social distancing and infection risk mitigation as required during the COVID-19 pandemic.

We ask that everyone takes note and appreciates the implications should this policy not be followed.

You will be asked to acknowledge these guidelines, along with the parents' and swimmers' codes of conduct. If you have any queries or concerns with these guidelines then please contact wokingsc.covid19@gmail.com.

Drop Off/Check-in

- Please see the diagrams at the end of this document which detail check-in zones and a one-way system to be used.
- Parents must arrive with swimmers changed and ready to swim (including hat and goggles) five minutes before the scheduled start of the session. Parents are advised to send swimmers into the pool with a towel or poncho that they can easily take off to swim and put back on afterwards.

- Swimmers must wait with one parent/helper in the check in zone as directed by the appointed assistant/COVID Liaison officer who will instruct swimmers to line up at 2 metre intervals to be checked into the session.
- At check-in, if the assistant/COVID Liaison officer believes the swimmer is unfit to swim a coach will be asked to make a decision at which point we reserve the right to take the swimmers temperature with a touch free digital thermometer.
- Social distancing of 2 metres must be observed upon entering the building and where possible within the session.
- Swimmers must arrive well hydrated, water bottles should not be brought into the building. And bring their own clearly marked water bottle if necessary.

Parents MUST remain outside for the duration of the session unless there is an emergency of the coach indicates that the swimmer needs his/her parent.

- Swimmers must only enter the building once the coach indicates that he/she is ready to receive the squad. The chaperone will direct the swimmers to a marked-out zone on the pool deck. A one-way system will be used to make sure that swimmers do not crossover with the next class which is awaiting check-in outside.

Late Arrivals

Due to the additional measures being taken it will not be possible to receive swimmers arriving late, parents must make every effort to arrive on time, if they are more than five minutes early then they should wait in their car.

Coaches responsibility starts poolside at the beginning of the session.

Viewing

At present viewing will not be permitted within the pool facility.

Health Issues during swimming

If a swimmer becomes unwell during a session, the swimmers emergency contact will be called from outside in to the pool by an assistant or Covid Officer who will assess the swimmer who will be isolated in a suitable area. The swimmer will then need to be collected as soon as possible.

Pick up

Parent/ responsible adult should be waiting outside of the pool in the swimmer collection zone. Please collect your swimmer(s) from outside the pool where they will be looked after by a chaperone.

- After the session ends swimmers will be required to towel dry and either put a poncho on wrap in a towel before walking to the exit to meet parent.

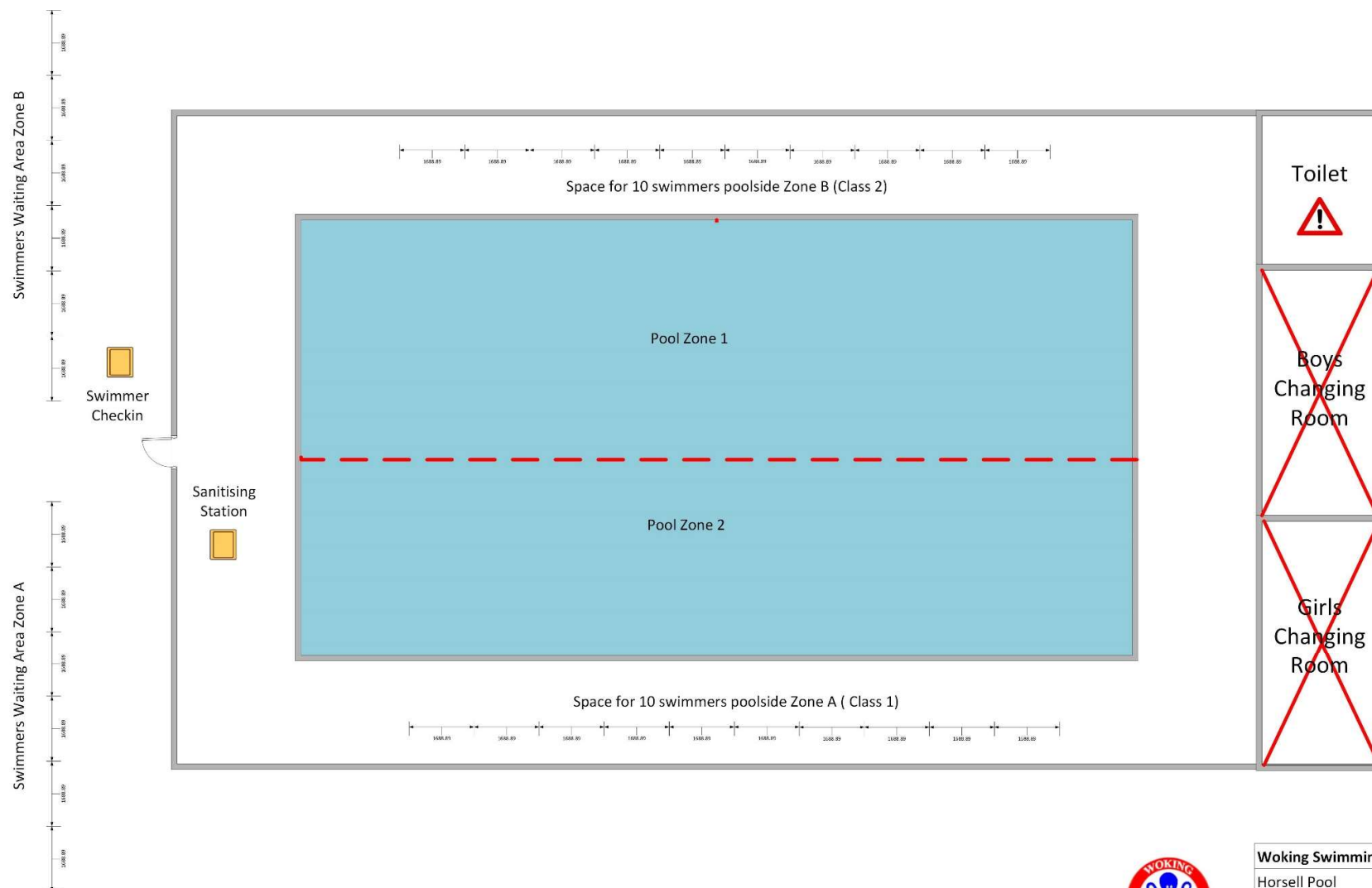
- When all swimmers are ready, the chaperone will escort them through the clearly signed and designated exit to be met by their parents outside. The chaperone will release swimmers once their parents have been located.
- Parents are requested to ensure social distancing in the waiting area

The coach will check the building before he/she leaves.

Coaches responsibility ends when the last child is collected.

All parents will be asked to acknowledge and strictly adhere to this revised Policy along with the **Parents' Code of Conduct**. If you have any queries or concerns with these guidelines then please contact wokingsc.covid19@gmail.com.

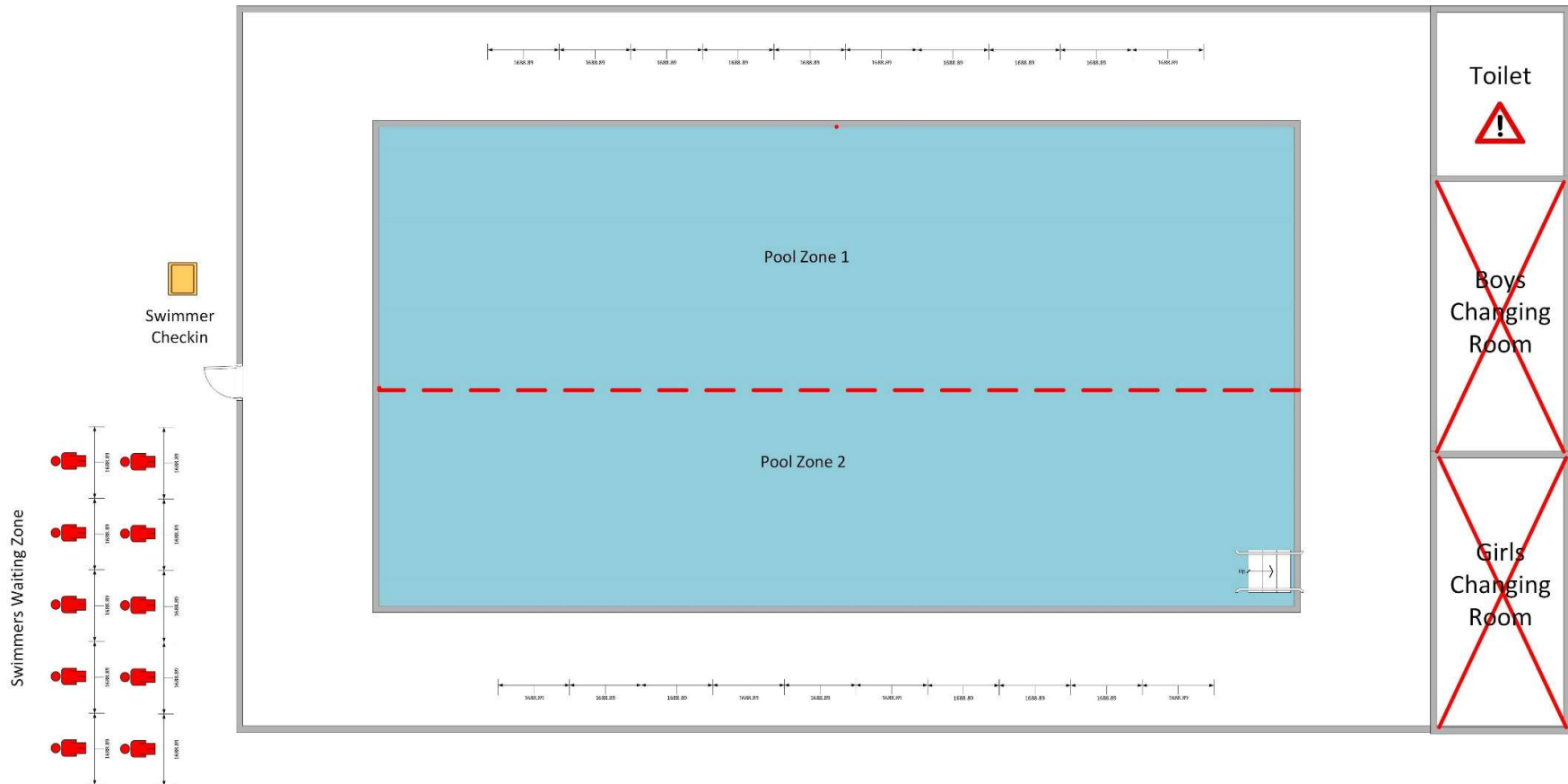
Horsell School pool layout



Woking Swimming Club
Horsell Pool
COVID-16 Special measures
Version 0.1
10th July 2020

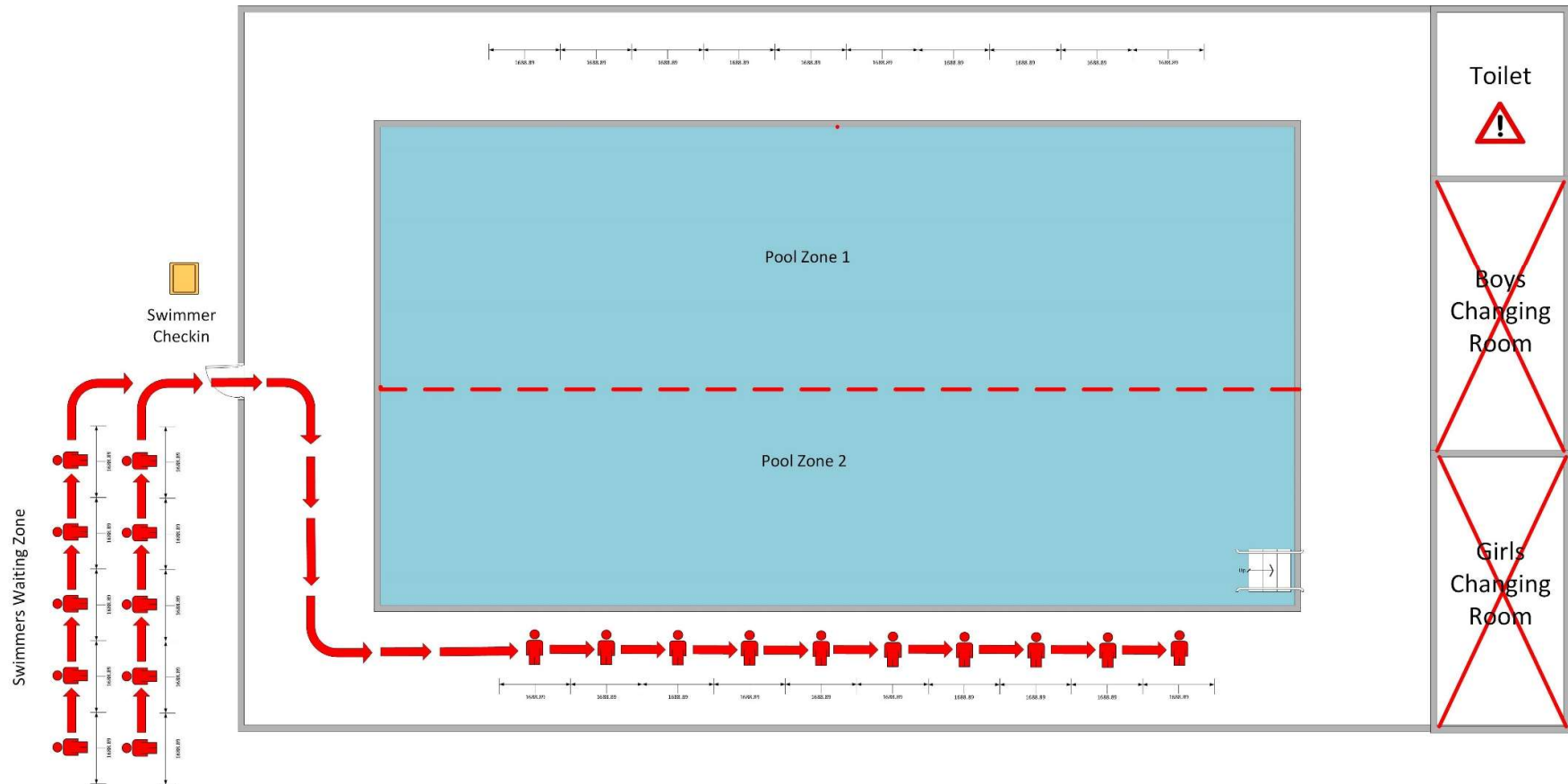
Check-in

Swimmers Check-in outside of the pool is designated zone.



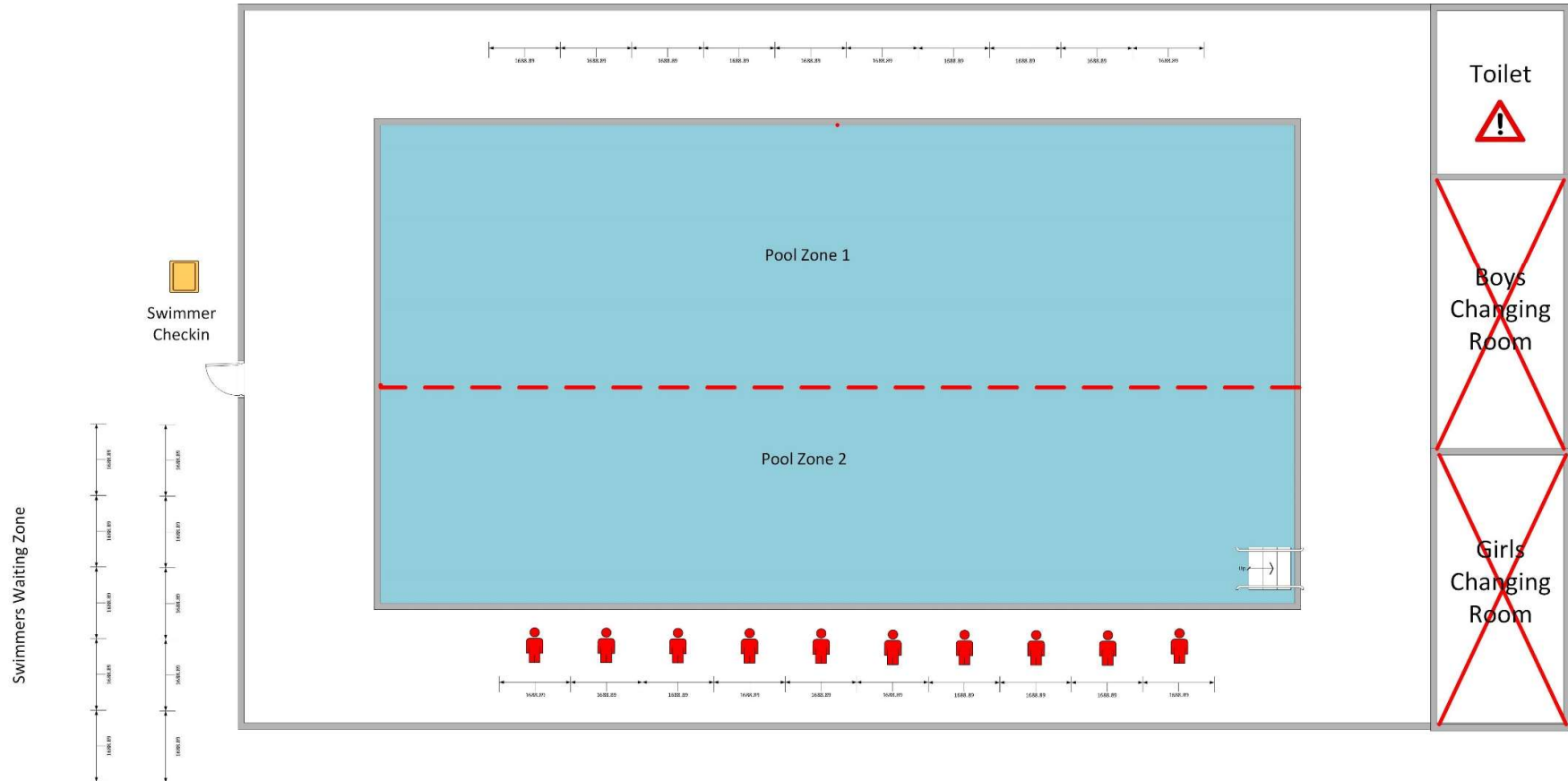
Pool Entry

After check-in a chaperone will direct swimmers to a designated zone on the pool deck and the parents move to the parent waiting area leaving the checking area free for the next class.



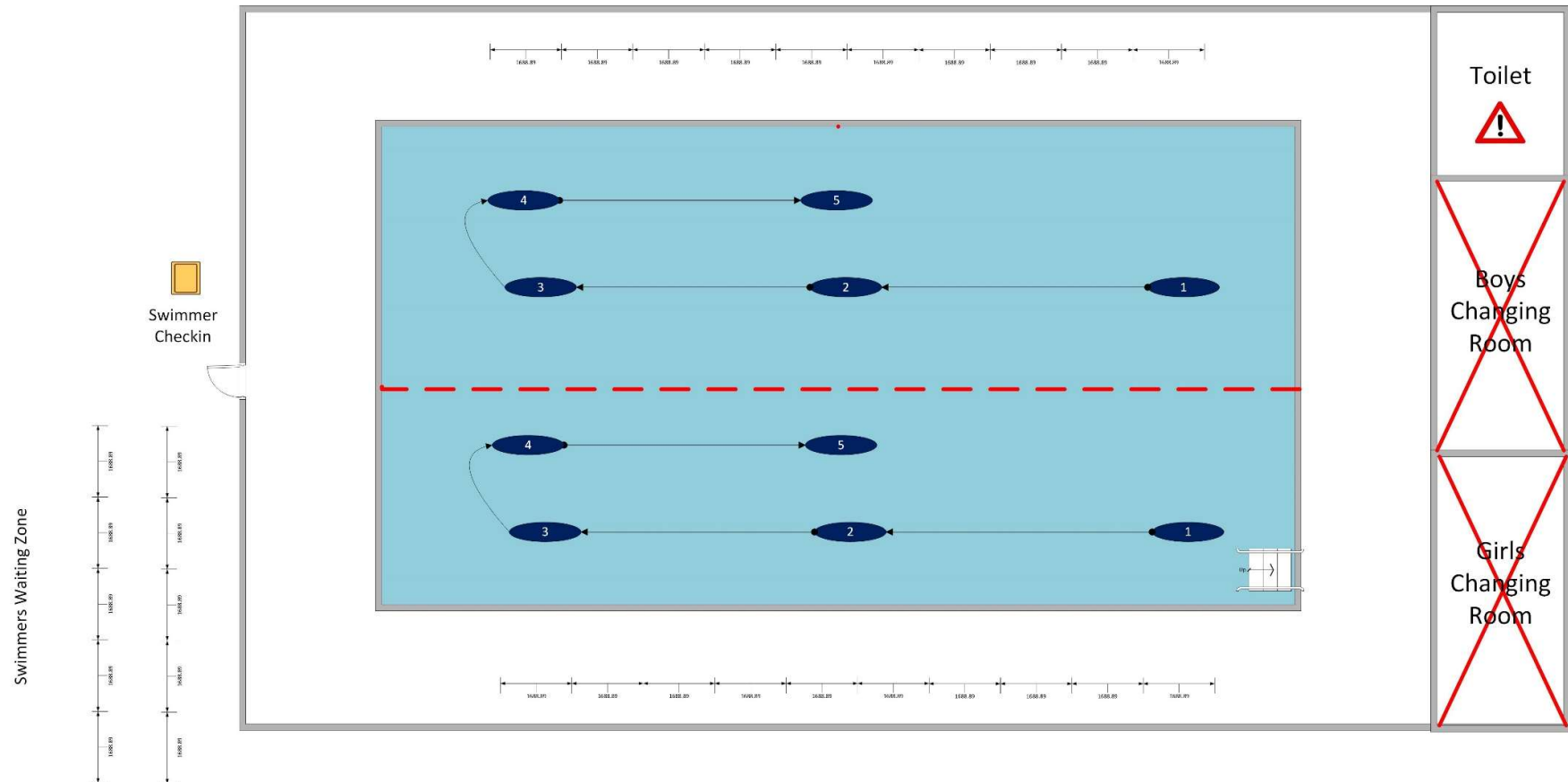
Preparing to swim

Swimmers wait in a marked-out area where they leave their towel and get ready to swim.



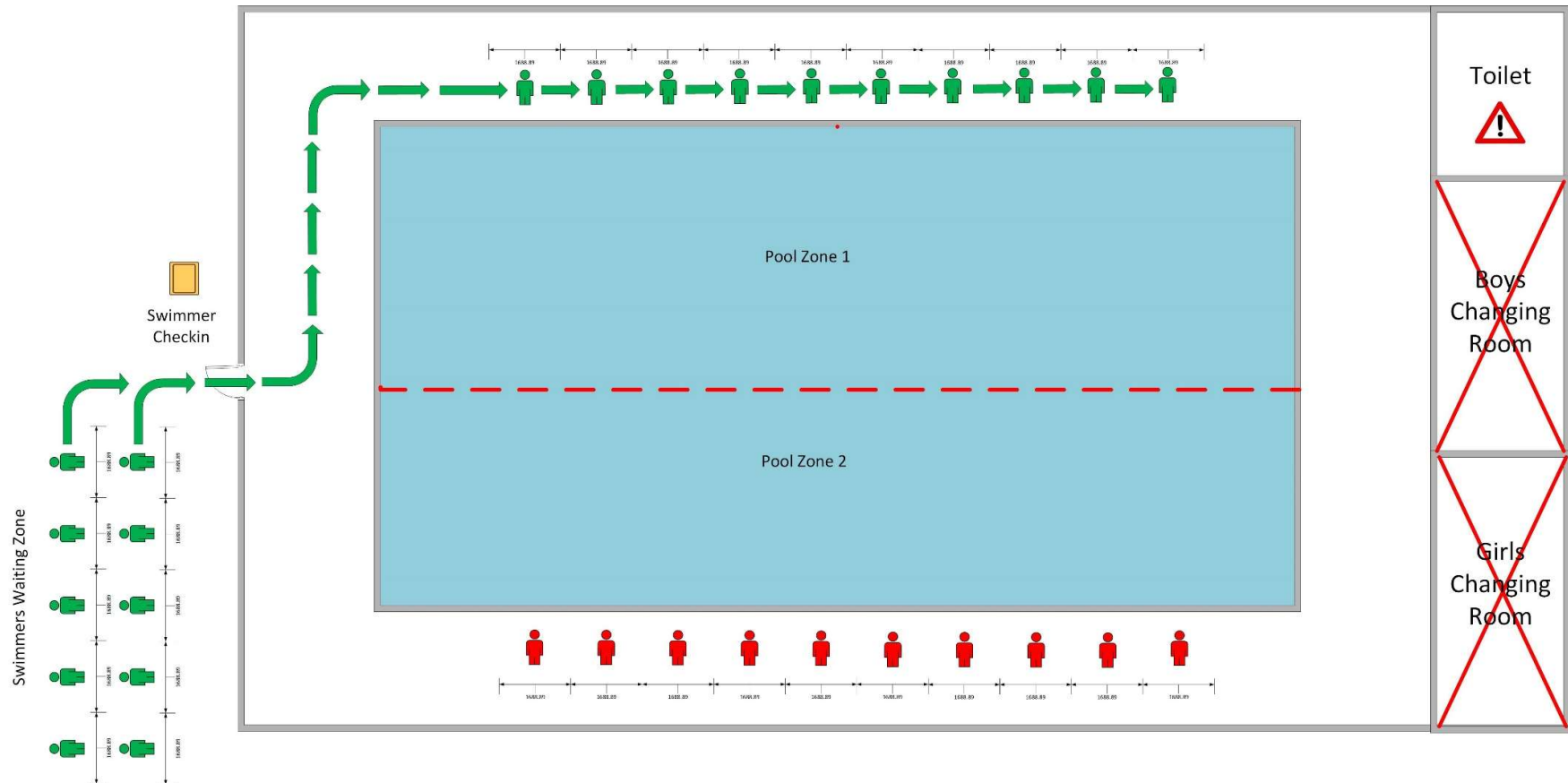
Training

Swimmers start to train as directed by a coach and implement social distancing.



After training

The swimmers return to their designate places on poolside while the next class assembles on the opposite side of the pool.



Exiting the pool

At the end of the session the swimmers dry off pool side and leave the pool by zone through the main exit as directed by a chaperone to be met by parents.

